

**CERTIFIED LAND CORNER RECORDATION**

DESCRIPTION OF CORNER EVIDENCE FOUND, AND ORIGINAL RECORD (if known)

LOCATION No evidence of corner monument found.  
 No other evidence found.  
 S.33 S.34  
 S. 4 S. 3 Corner re-established by proportionate measurement along township  
 T.16N., R.66W. line.  
 T.15N., R.66W. G.L.O. record - Granite boulder, 14 x 10 x 10 for corner . . .  
 6th P.M. (Edwin James, August 1870)

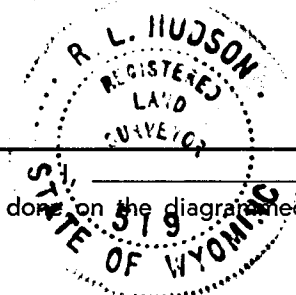
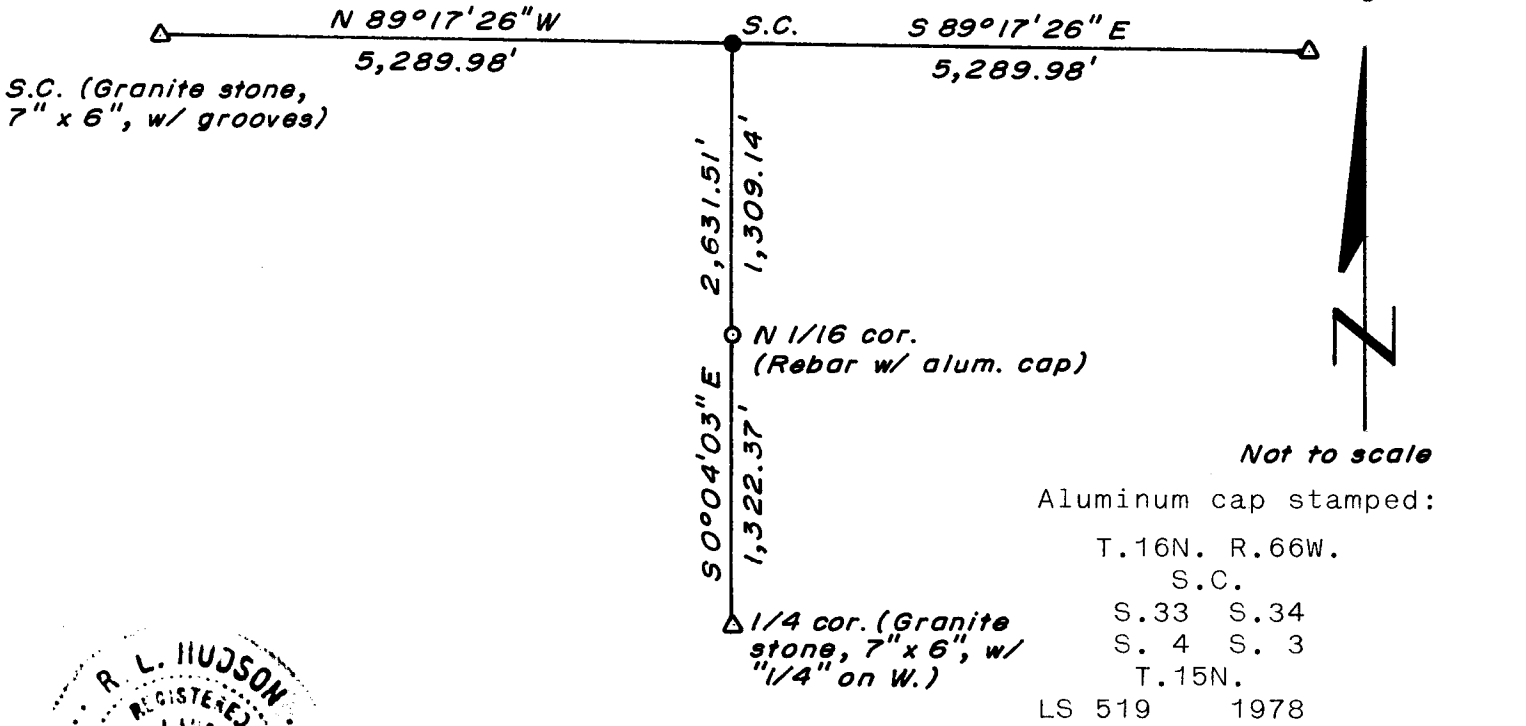
DESCRIPTION OF MONUMENT AND ACCESSORIES ESTABLISHED  
 TO PERPETUATE THE ORIGINAL LOCATION OF THIS CORNER:

At the corner: Set a 5/8" dia. x 24" long rebar with 2" dia. aluminum cap  
 for corner.  
 Accessories: Set a 2" x 2" Pine post, painted red over white, 1 foot NE  
 of corner monument.

SKETCH, WITH COURSE AND DISTANCE TO ADJACENT CORNER IF DETERMINED IN THIS SURVEY.

(May Sketch or Paste Reproduction on Reverse Side.)

1. Basis of Bearing - By solar observation, one mile east.
2. Distances based on measurements by electronic means.



R. L. Hudson certify that I have carefully performed or reviewed the work done on the diagrammed corner as reported on this recordation form and approve the same.

*R. L. Hudson*      Wyoming L.S. No. 519  
 Signature of Surveyor      Registration No.

STATE OF WYOMING,  
 Office of Clerk and Recorder,  
 County of \_\_\_\_\_

This "corner record" was filed for record on the 5 day of May, 1978, was noted on the cross-index plat and is assigned page No. \_\_\_\_\_, in book No. \_\_\_\_\_.

*James C. Whitehead*  
 County Official

Cross Index No. _____	T. _____	R. _____	Mer. _____
_____	T. _____	R. _____	Mer. _____
_____	T. _____	R. _____	Mer. _____
_____	T. _____	R. _____	Mer. _____
_____	T. _____	R. _____	Mer. _____
_____	T. _____	R. _____	Mer. _____
_____	T. _____	R. _____	Mer. _____